

Trail Rules

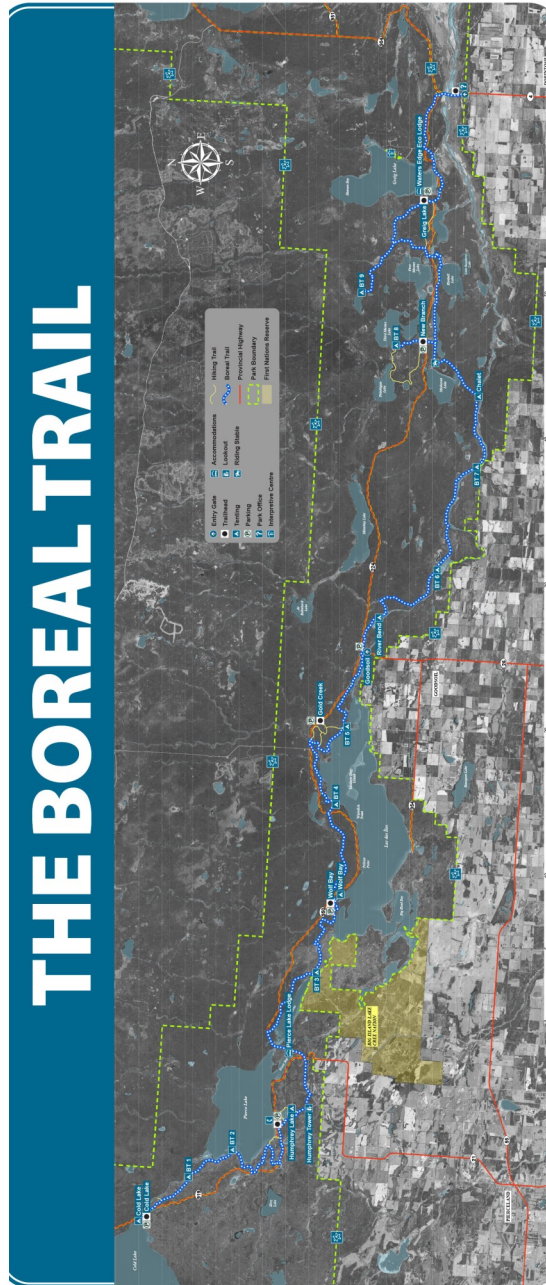
All Hikers Must Check IN/OUT

Call 1-306-236-7680

Please leave a message if calling outside office hours.

1. **Stay on Trail:** Stepping off the trail can cause damage to small plants and hidden animal homes.
2. **Be Prepared:** Bring along a backpack with water, a snack and other equipment in case of an emergency.
3. **Leave No Trace:** Do not leave anything behind. The trail should look as though you were never there.
4. **Be respectful to wildlife:** This is their home, not ours. If you encounter wildlife on the trail be sure to keep your distance and give them space.
5. **Leave it alone if you don't know what it is:** There are some plants, berries and mushrooms in the forest that are poisonous and should be avoided.
6. **Don't touch baby animals:** Animal Mothers will often hide their young in the bush or tall grass. It's mother will come back for it.
7. **Be considerate of other trail users.**

THE BOREAL TRAIL



Ministry of Parks, Culture and Sport are not responsible for personal injury, damage to property, or other losses. Conditions of use are subject to change without notice. For more information, please contact the Ministry of Parks, Culture and Sport.

Park Watch: 1 800 667-1788
saskparks.com

Meadow Lake Provincial Park Hiking Trails Sandy Pines, Humphrey Lake, Wolf Bay



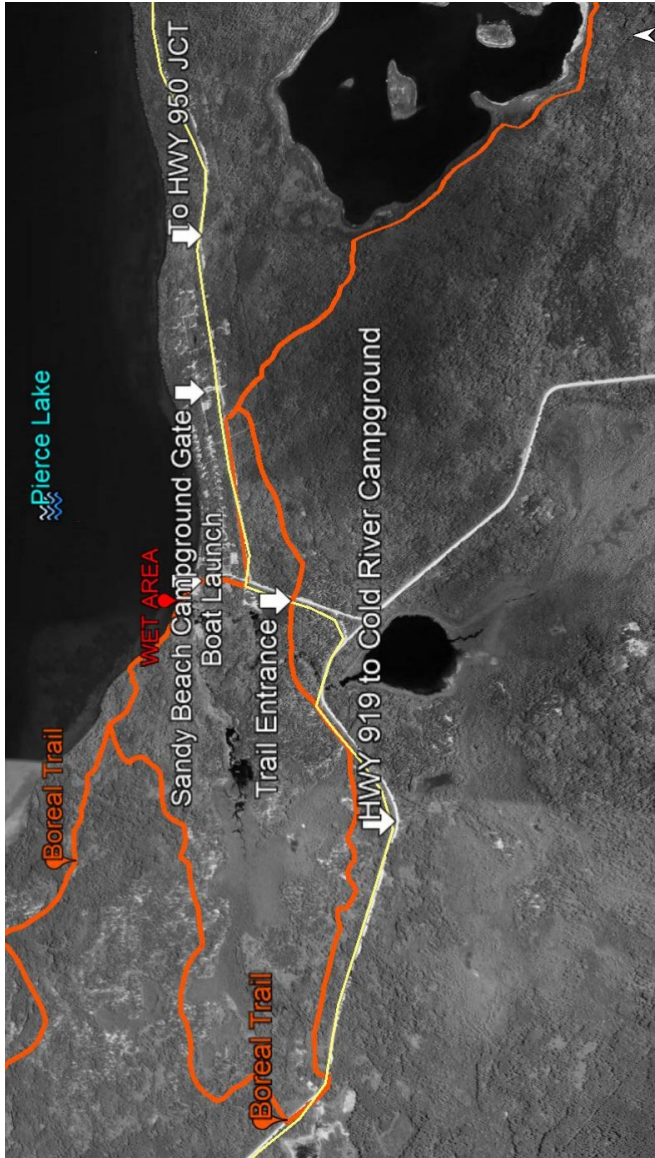
Meadow Lake Provincial Park
www.saskparks.com
Park Watch: 1-800-667-1788

Tel: 1-306-236-7680

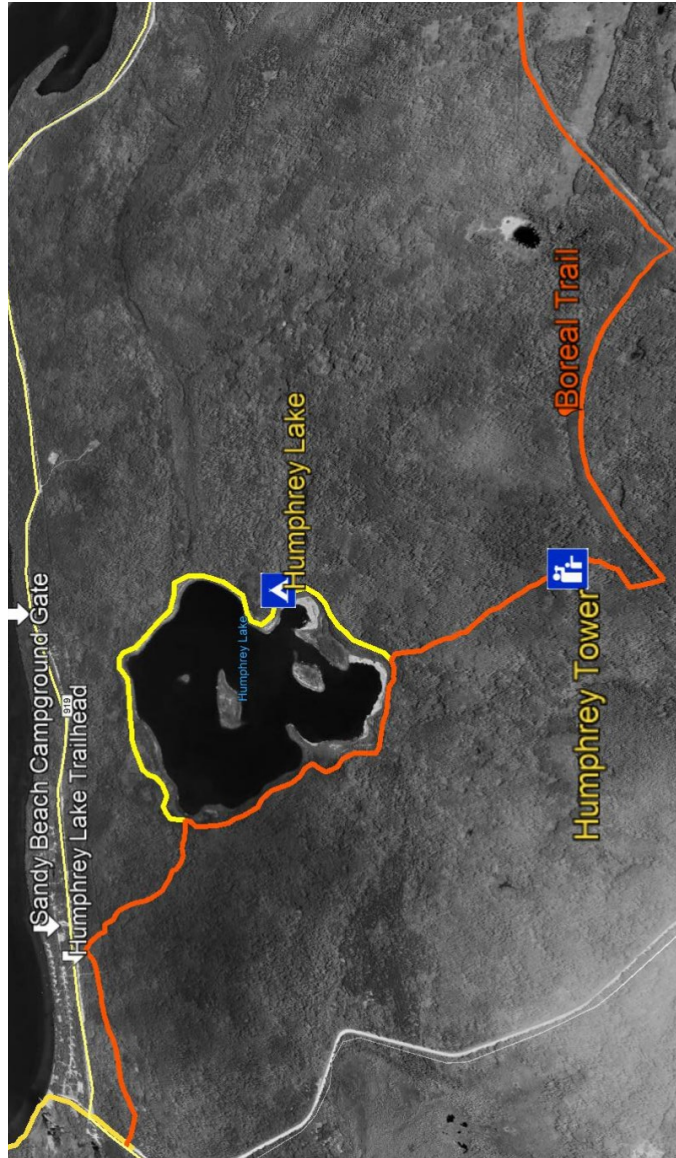
Email: MeadowLake@gov.sk.ca



Sandy Pines Hiking Trail—5.2 KM



Humphrey Lake Hiking Trail 3 KM to Tower



Wolf Bay Hiking Trail—3 KM

